

PERSONAL PROTECTIVE EQUIPMENT

**N95, KN95, 3 PLY, KIDS
AND SUBLIMATED
PROTECTIVE MASKS**



N95 NIOSH FDA PROTECTIVE MASKS



Vertical Source, Inc | 732-530-5330 | info@verticalsource.com

N95 OPTION 1

U.S. Based Company

**N95 Particulate Respirator
Production Overseas**

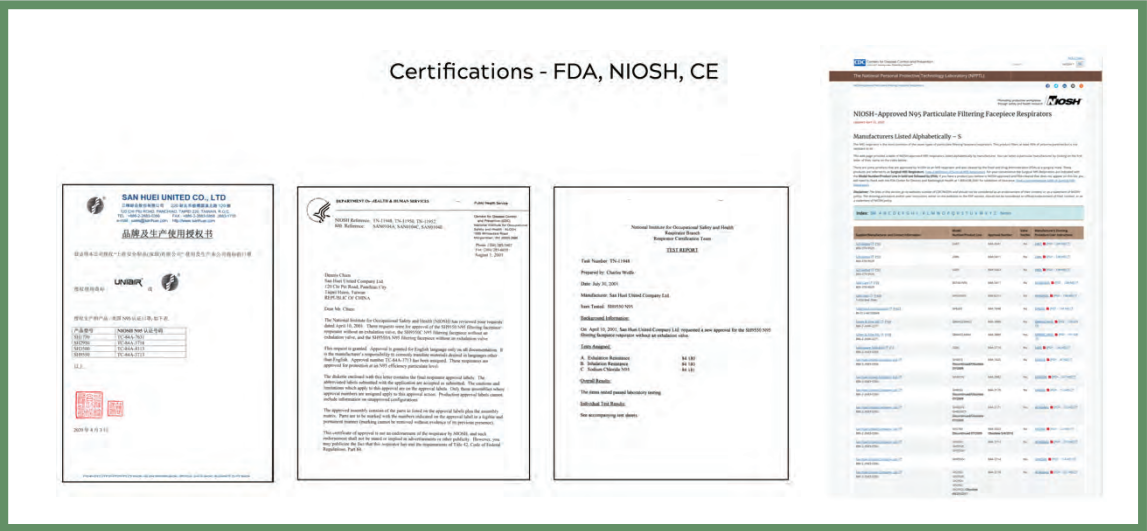


N95 OPTION 2

SAN HUEI-N95 PARTICULATE RESPIRATOR

MANUFACTURER MODEL APPROVAL NUMBER CERTIFICATIONS

San Huel United Company, Ltd. SH9550 84A-3713 FDA, NIOSH, CE

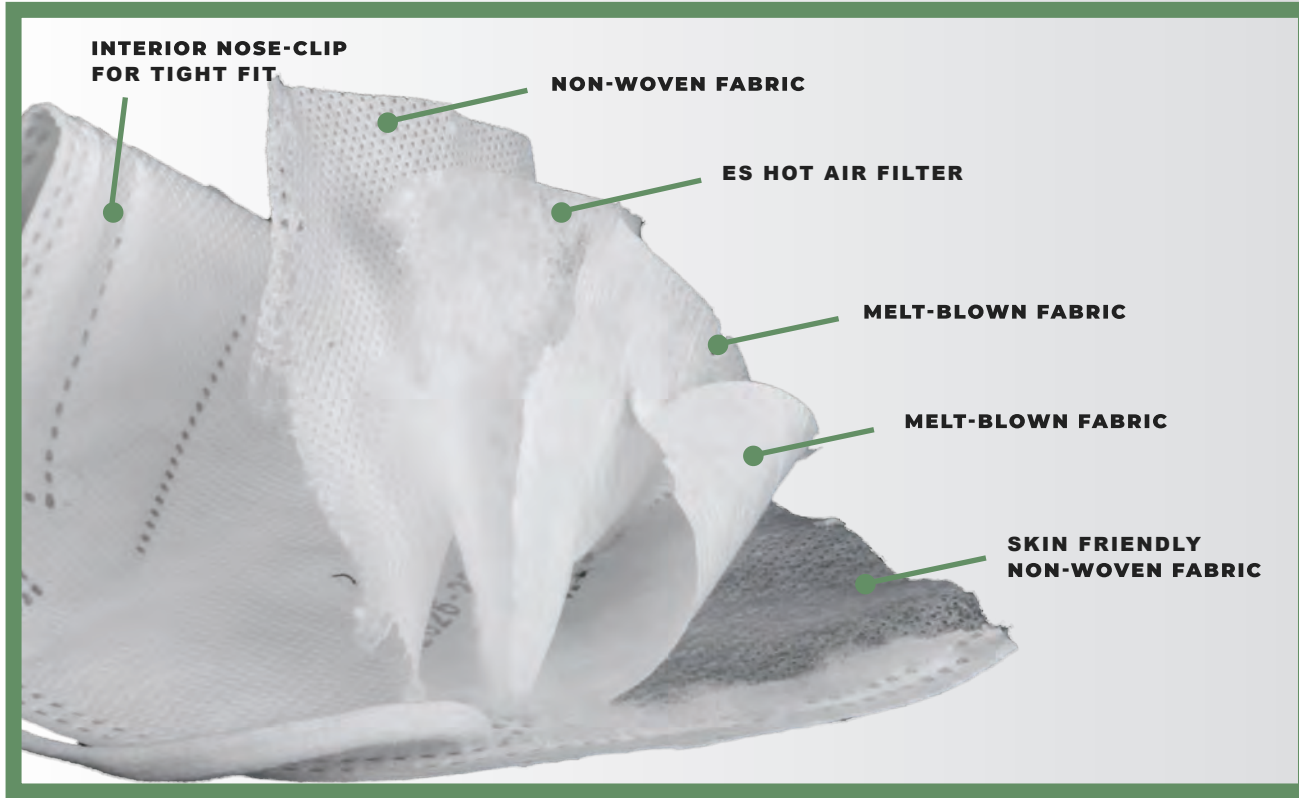


5 LAYER KN95 PROTECTIVE MASK



Vertical Source, Inc | 732-530-5330 | info@verticalsource.com

PRODUCT IMAGES



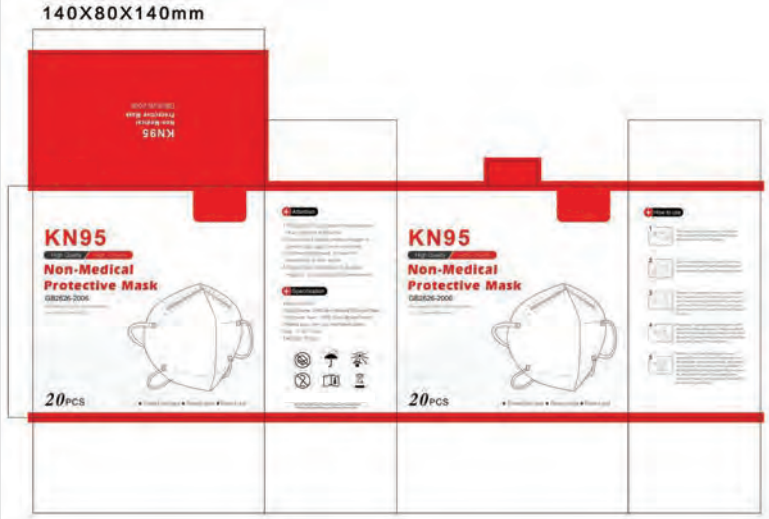
Vertical Source, Inc | 732-530-5330 | info@verticalsource.com

DETAILS

Model:	LY-N900		
Product Name:	5 Layer KN95 Protective Face Mask		
Materials:	2 Layers of Non-woven Fabric + 1 Layer of ES Hot Air Filter + 2 Layers of Melt-blown, Non-woven Polypropylene		
Packing Detail:	1pcs/bag 20/40 bags/box 60boxes/CTNS		
Packing Size (40pcs/box):	Box: 14.5 x 13 x 13.5cm Carton: 67 x 35.5 x 56cm	40pcs / 1600pcs	NW/GW: 14.4/15.5 KGS
Packing Size (20pcs/box):	Box: 14 x 7 x 13.5cm Carton: 43.5 x 37 x 56.5cm	20pcs / 1200pcs	NW/GW: 10.8/11.8 KGS
20FT	174 CTNS 206400 PCS		
40HQ	406 CTNS 483600 PCS		
Layers:	5 Layers		
Certifications:	CE FDA		
Supply Ability:	3,500,000 PCS/Day		



PACKAGING



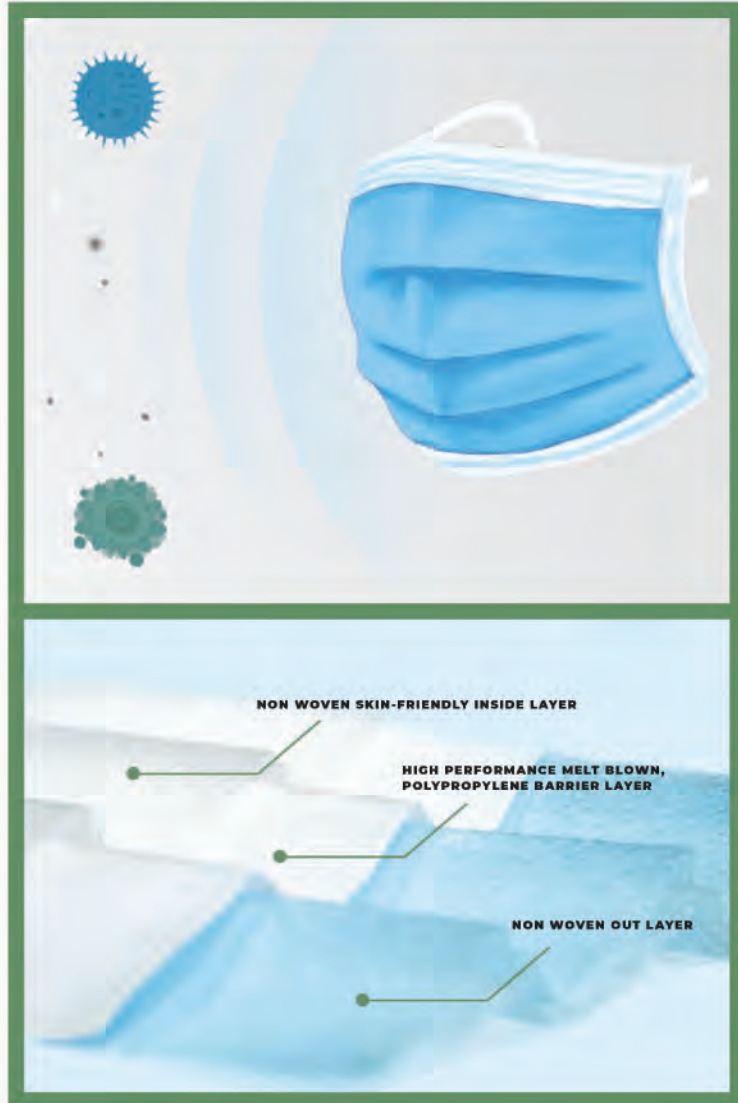
3 LAYER PROTECTIVE MASK



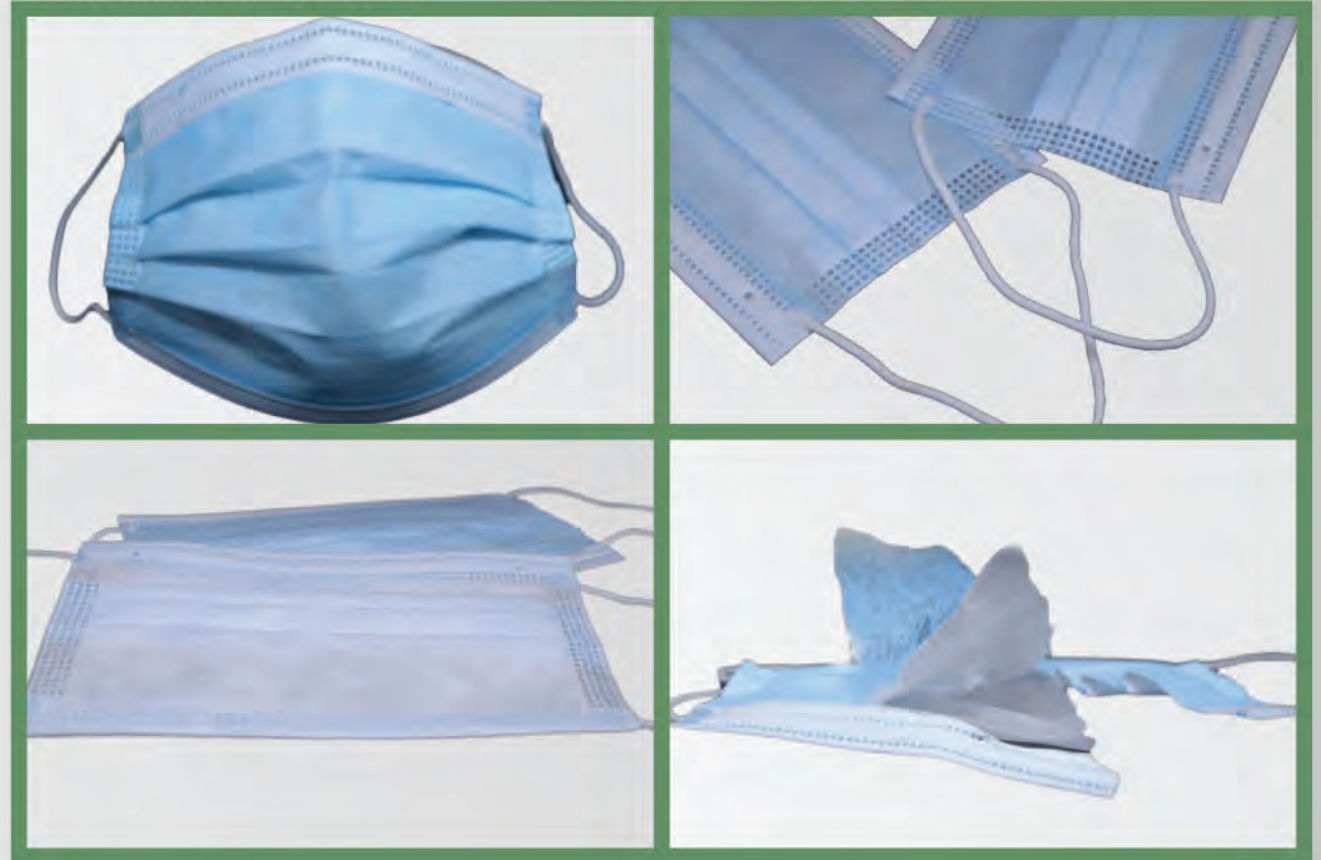
Vertical Source, Inc | 732-530-5330 | info@verticalsource.com

3 PROTECTIVE BARRIER LAYERS

Designed to Obstruct Droplets, Viruses, pm2.5 etc.



PRODUCT IMAGES



Vertical Source, Inc | 732-530-5330 | info@verticalsource.com

**AVAILABLE FOR
ALL AGES**

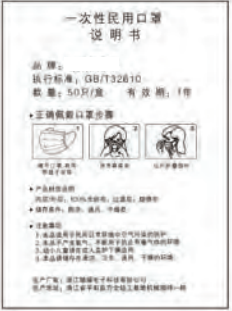
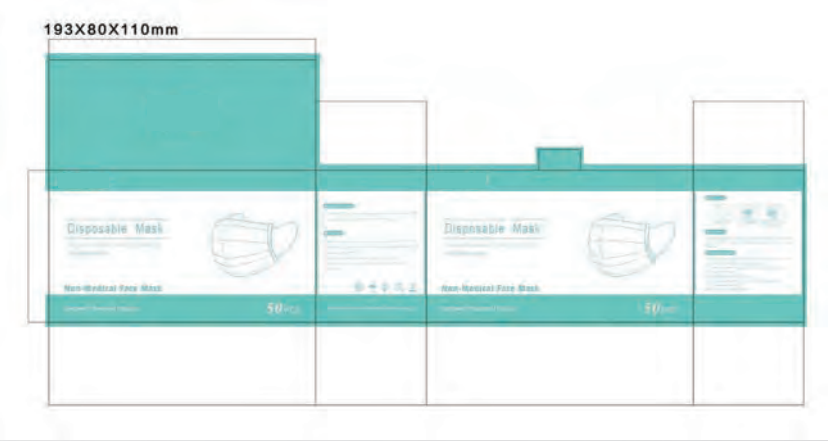


DETAILS

Model:	LY-D900		
Product Name:	3 Layer Protective Face Mask		
Materials:	2 Layers of Non-woven Fabric + 1 Layer of Melt-blown, Non-woven Polypropylene		
Packing Detail:	25pcs/bag 2 bags/box	40boxes/CTNS	
Packing Size (40pcs/box):	Box: 14.5 x 13 x 13.5cm Carton: 40 x 34 x 56.5cm	40pcs / 2000pcs NW/GW: 7.6/8.6 KGS	
20FT	379 CTNS	758000 PCS	
40HQ	875 CTNS	1752000 PCS	
Layers:	3 Layers		
Supply Ability:	3,000,000 PCS/Day		



PACKAGING



MASKS FOR KIDS

PRODUCT IMAGES



**3 and 5 KN95 Ply
Protective Masks
Available in kid sizes.**

SUBLIMATED MASKS



Vertical Source, Inc | 732-530-5330 | info@verticalsource.com

SUBLIMATED MASKS

USA MADE

- Made from tight knit double-walled Fabric
- Washable & Reusable
- Covers your face, mouth & nose to reduce the spread of germs
- Keeps you from touching your face
- Contains your cough/sneeze

Lead Time: Partial Shipping in approx. 2-4 weeks after approvals



PRODUCTION

WORKSHOP



Our manufacturer produces their own melt-blown protective material which is used in the personal protective equipment we distribute.

WAREHOUSING



PRINTING



DIECUTTING



FORMING



TESTING





Fiscal Year 2020

CERTIFICATION OF FDA REGISTRATION

This certifies that:



has completed the FDA Establishment Registration and Device Listing with the US Food & Drug Administration, through

Shenzhen CCT Testing Technology Co., Ltd.

Owner/Operator Number: [REDACTED]



Device Listing#:

Listing No	Code	Device Name	Proprietary Name
D384743	QKR	FACE MASK (EXCEPT N95 RESPIRATOR) FOR GENERAL PUBLIC/HEALTHCARE PERSONNEL PER IIE GUIDANCE	Face mask ,Disposable face mask, Protective mask,LY-D900,LY-D901,LY-D902,LY-D903,LY-D904, LY-D905,LY-D906,LY-D907,LY-D908,LY-D909,LY-N900,LY-N901,LY-N902,LY-N903,LY-N904,LY-N905,LY-N906,LY-N907,LY-N908,LY-N909

CCT will confirm that such registration remains effective upon request and presentation of this certificate until the end of the calendar year stated above, unless said registration is terminated after issuance of this certificate. CCT makes no other representations or warranties, nor does this certificate make any representations or warranties to any person or entity other than the named certificate holder, for whose sole benefit it is issued. This certificate does not denote endorsement or approval of the certificate-holder's device or establishment by the U.S. Food and Drug Administration. CCT assumes no liability to any person or entity in connection with the foregoing.

Pursuant to 21 CFR 807.39, "Registration of a device establishment or assignment of a registration number does not in any way denote approval of the establishment or its products. Any representation that creates an impression of official approval because of registration or possession of a registration number is misleading and constitutes misbranding." The U.S. Food and Drug Administration does not issue a certificate of registration, nor does the U.S. Food and Drug Administration recognize a certificate of registration. CCT is not affiliated with the U.S. Food and Drug Administration.

Shenzhen CCT Testing Technology Co., Ltd.
W: www.fda-test.com E: fda@cct-test.com
T: 400-8788-298 T: 86-755-36816737



Web: <http://www.fda.gov> Tel: 1-888-INFO-FDA (1-888-463-6332) e-mail: webmail@oc.fda.gov

شهادة - 증명서 - Certificat - 證明書 - Сертификат - Certificate

Form QAT_10-M04, version 00, effective since March 6th, 2020

Certificate of Compliance



No. [REDACTED]

Certificate's Holder:



Manufacturer:

Certification ECM Mark:



Product:
Model(s):

FFP2 face mask
LY-N900, LY-N901, LY-N902, LY-N903,
LY-N904, LY-N905, LY-N906, LY-N907,
LY-N908, LY-N909

Verification to:

Standard:
EN149:2001+A1:2009
related to CE Directive(s):
R 2016/425 (Personal Protective Equipment)

Remark: This document has been issued on a voluntary basis and upon request of the manufacturer, it is our opinion that the technical documentation received from the manufacturer is satisfactory for the requirements of the ECM Certification Mark. The conformity mark above can be affixed on the products accordingly to the ECM regulation about its release and its use.

Additional information and clarification about the Marking:



The manufacturer is responsible for the CE Marking process, and if necessary, must refer to a Notified Body. This document has been issued on the basis of the regulation on ECM Voluntary Mark for the certification of products. RG01_ECM rev.3 available at: www.entecerma.it

Issuance date: 01 April 2020

Expiry date: 31 March 2025



Ente Certificazione Macchine Srl

Via Ca' Bella, 243 - Loc. Castello di Serravalle - 40053 Valsamoggia (BO) - ITALY
☎ +39 051 6705141 ☎ +39 051 6705156 ✉ info@entecerma.it 🌐 www.entecerma.it

Due to high rates of fraudulent copying of certificates, we only make our certification details available to paying customers.